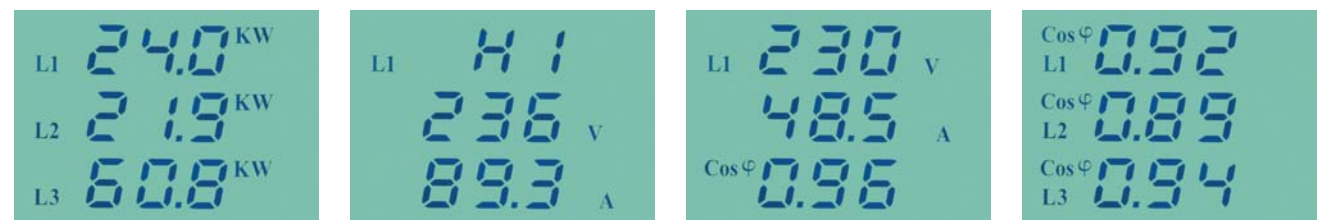


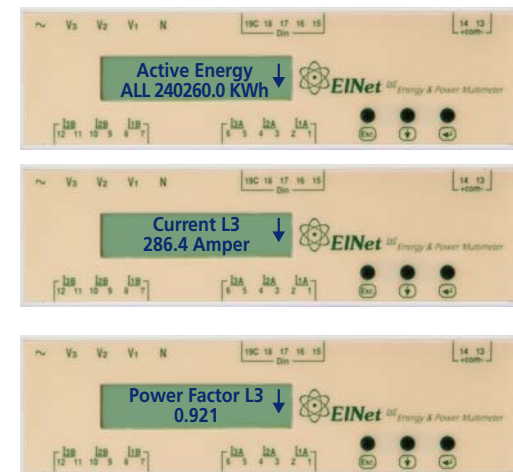
VIP Multimeter

- Three phase Multimeter
- Voltage, Current, Frequency, power & power factor Measurements.
- Peak value display of all Measurements.
- Power demand for current and real power.
- Phase absence & disorder relay.
- Accuracy 0.5% in nominal range.
- LCD back light display.
- Simple installation - panel mounted.



EINet TXT

- Dual three phase Energy Multimeter.
- Simple operated menus.
- 1600 sample per cycle.
- Accuracy 0.1% with special calibration.
- Up to 4 months of energy data logging.
- RS485 Communication Port.
- LCD Text display 2X16 characters.
- Four Digital Inputs.
- Simple installation - DIN rail.



Technical Specification

	Elnet GT	Elnet GR	Elnet LT/LTC	Elnet TXT	VIP
Voltage	110/230VAC	110/230VAC	110/230VAC	110/230VAC	110/230VAC
Power Requirement	60/50 Hz, 30VA	60/50 Hz, 30VA	60/50 Hz, 15VA	60/50 Hz, 20VA	60/50 Hz, 15VA
Dimensions (HxWxD)	144x144x100 mm	144x144x100 mm	96x96x80 mm	96x159x57 mm	96x96x80 mm
Shipping Weight	650 gr	650 gr	450 gr	450 gr	450 gr
Voltage Limits	1000VAC	1000VAC	1000VAC	1000VAC	1000VAC
Current Limits	5A	5A	5A	5A	5A
Working Conditions	-20 – 70°C	-20 – 70°C	-20 – 70°C	-20 – 70°C	-20 – 70°C
Display	Color 240x320	Graphic 160x128	Graphic 128x64	Text 2x16	Back light

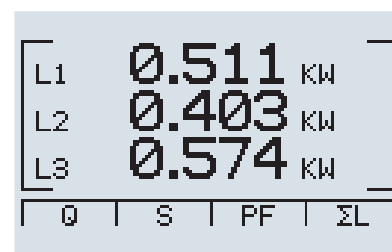
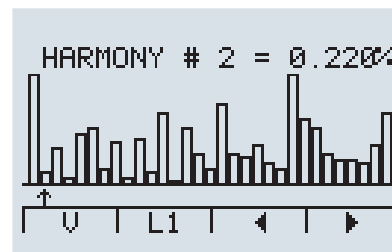
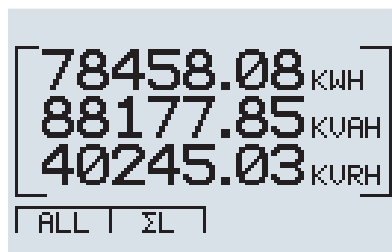
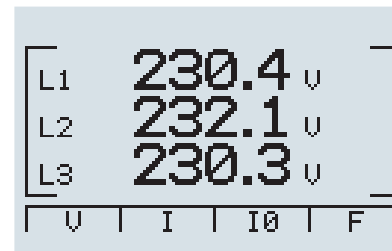
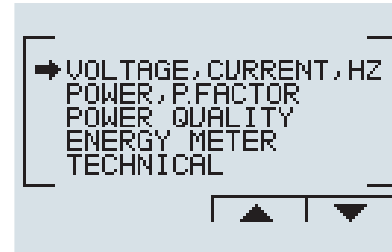


General

- ELNet power multimeter is a compact, multi functional, three-phase multimeter, especially designed to suit the needs of electrical network measurement.
- ELNet is capable of measuring voltage, current, frequency, active & reactive & apparent power, power factor, and more.
- ELNet power multimeter menu screens enable easy operation and multi lingual Interface.

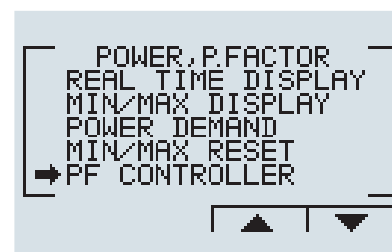
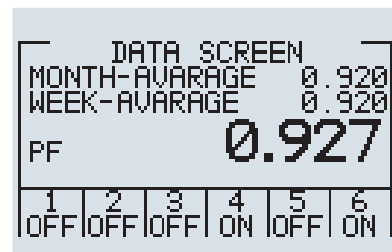
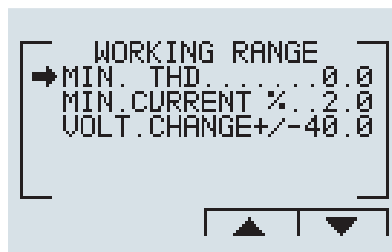
ELNet LT – Multimeter

- Simple operated menus.
- Multilingual support.
- Up to One year of energy data logging.
- Harmonics - up to 64th Harmonic.
- 1600 samples per cycle.
- Class 0.1 according to British standard EN50160.
- Accuracy 0.1% with special calibration.
- RS485 Communication Port.
- State of the art Graphic LCD
- High resolutions display 128X64 pixels.
- Displays of Waveform and Bar graph.
- Simple installation- Panel mounted.



ELNet LTC – Power factor controller

- All ELNet LT Features plus:
- Build in Power factor controller.
- Switching up to 6 stages of capacitor banks.
- Auto detection capacitors size.
- Real time Power factor display.
- Weekly & monthly Power factor display.
- High THD limits setting.
- High/Low voltage limits setting.
- Low load limit setting.



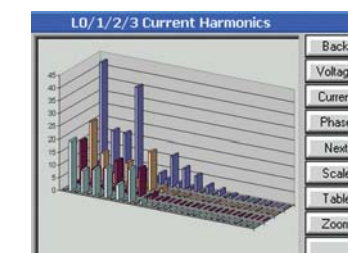
ELNet GT – Color graphic Energy & Power analyzer

- Simple operated menus.
- Multilingual support.
- All Data daily logged - up to 2 years.
- Harmonics - up to 64th Harmonic.
- 1600 samples per cycle.
- Class 0.1 according to EN50160 standard.
- Accuracy 0.1% with special calibration.
- Up to one-year Alarms log.
- Ethernet (TCP/IP) & RS232/485 ports
- Backlight color Graphic LCD
- High resolutions display 240x 320 pixels.
- Touch screen 5.7"
- Waveform and Bar graph Displays.
- Simple installation - panel mounted.
- Programmable Relays.

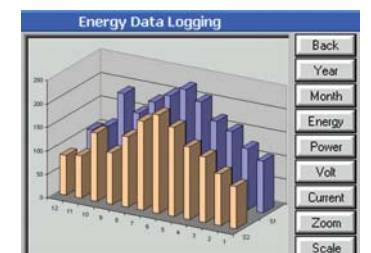
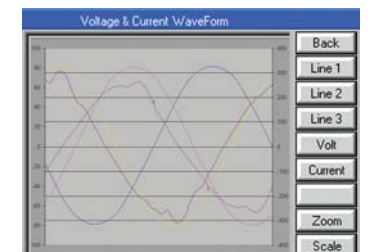
Date	Time	Status
24.2.08	12:34:47	Alarm
24.2.08	12:35:21	Off

	L1	L2	L3	Total
P (Kw)	6.254	4.529	7.091	17.83
Q (Kvar)	1.880	0.697	2.502	5.044
S (Kva)	6.508	4.602	7.545	18.64
PF	0.972	0.941	0.892	0.913

210353.1 kWh
240260.9 kVArh
319332.5 kVAh



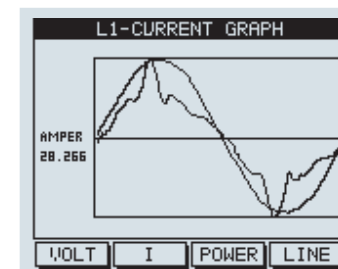
145.8 Amper
196.3 Amper
241.0 Amper



ELNet GR – Energy & Power analyzer

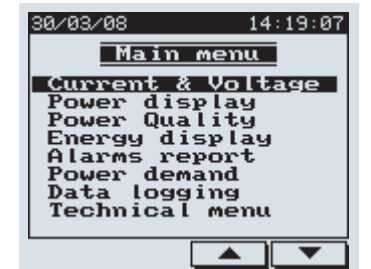
All ELNet GT Features with the following changes:

- State of the art Backlight Graphic LCD
- 5" High resolutions display 160x128 pixels.



L	P	Q	S
1	6.251	1.877	6.527
2	4.518	0.729	4.576
3	7.092	2.550	7.537
Σ	17.86	5.156	18.64

PF=0.961



Peak 1.877 L1 KVAR
0.728 L2 KVAR
2.541 L3 KVAR